

LIBRARY VISION SERIES

2018 Price List

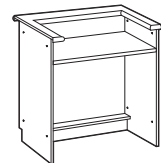
CIRCULATION

PAGE 1

Model #	Description	Product Size (W x D x H)	Ship Wt (lbs)	Suggested Retail
VS-3101	Closed Storage	36 x 30 x 39	210	\$ 2,377.00
VS-3102	90 Degree Radius Corner	30" x 30" x 38-1/2"	170	1,749.00
VS-3103	Open Storage	35 x 30 x 39	180	1,951.00
VS-3105	Two-Drawer Unit—39H	36 x 30 x 39	315	2,250.00
VS-3108	Depressible Book Truck	28 x 24 x 30	125	2,774.00
VS-3109	Book Truck Storage	36 x 30 x 39	120	1,444.00
VS-3110-O	90 Deg. Open Corner	30 x 30 x 39	90	1,954.00
VS-3111-60	Computer Station	60 x 30 x 39	185	2,931.00
VS-3111-72	Computer Station	72 x 30 x 39	220	3,162.00
VS-3113	End Panel	2 ¹ / ₄ x 30 x 38	25	457.00
APD	Pencil Drawer	22 ³ / ₄ x 18 x 2	5	113.00



VS-3101



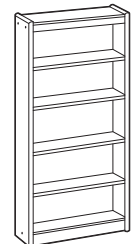
VS-3107

SINGLE FACED SHELVING

VS-3261-S	36" Single-Face Shelving Starter	37 x 12 x 35	95	\$ 900.00
VS-3261-A	36" Single-Face Shelving Adder	36 x 12 x 35	85	772.00
VS-3262-S	48" Single-Face Shelving Starter	37 x 12 x 46	125	1,029.00
VS-3262-A	48" Single-Face Shelving Adder	36 x 12 x 46	110	889.00
VS-3263-S	60" Single-Face Shelving Starter	37 x 12 x 60	155	1,175.00
VS-3263-A	60" Single-Face Shelving Adder	36 x 12 x 60	135	1,031.00
VS-3264-S	72" Single-Face Shelving Starter	37 x 12 x 72	190	1,322.00
VS-3264-A	72" Single-Face Shelving Adder	36 x 12 x 72	160	1,147.00
VS-3265-S	84" Single-Face Shelving Starter	37 x 12 x 84	220	1,463.00
VS-3265-A	84" Single-Face Shelving Adder	36 x 12 x 84	185	1,272.00



VS-3261-S



VS-3264-S

STANDARD FINISH: Natural Oak (NO), Medium Oak (MO) STANDARD EDGE STYLES: Round-over, Fluted (beaded), Half-round, Custom

1117

All items are F.O.B. Missoula, MT 59802. Allow 4-6 weeks lead time for shipping.

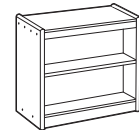
LIBRARY VISION SERIES

2018 Price List

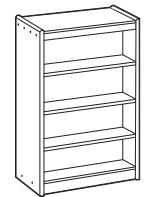
DOUBLE FACED SHELVING

PAGE 2

Model #	Description	Product Size (W x D x H)	Ship Wt (lbs)	Suggested Retail
VS-3561-S	36" Double-Face Shelving Starter	37 x 21 ³ / ₄ x 35	160	\$ 1,496.00
VS-3561-A	36" Double-Face Shelving Adder	36 x 21 ³ / ₄ x 35	135	1,295.00
VS-3562-S	48" Double-Face Shelving Starter	37 x 21 ³ / ₄ x 46	205	1,748.00
VS-3562-A	48" Double-Face Shelving Adder	36 x 21 ³ / ₄ x 46	180	1,505.00
VS-3563-S	60" Double-Face Shelving Starter	37 x 21 ³ / ₄ x 60	255	2,027.00
VS-3563-A	60" Double-Face Shelving Adder	36 x 21 ³ / ₄ x 60	215	1,730.00
VS-3564-S	72" Double-Face Shelving Starter	37 x 21 ³ / ₄ x 72	305	2,319.00
VS-3564-A	72" Double-Face Shelving Adder	36 x 21 ³ / ₄ x 72	255	1,972.00
VS-3565-S	84" Double-Face Shelving Starter	37 x 21 ³ / ₄ x 84	355	2,574.00
VS-3565-A	84" Double-Face Shelving Adder	36 x 21 ³ / ₄ x 84	295	2,167.00



VS-3561-S



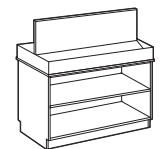
VS-3563-S

SHELVING ACCESSORIES

VS-DS-36	Display (Periodical) Shelf Accessory	35 x 2 x 14	10	\$ 208.00
VSL-36	Accessory Shelf	35 x 12 x 1	15	185.00
WS-3	Wire Book Stops (set of 3)	8 x 6 x 1/4	1	98.00
NPI-10	Newspaper Insert w/Five Rods	1 x 1 x 34	5	686.00
NPR	Newspaper Rod (each)	1 x 1 x 34"	5	49.00

TECHNICAL

VS-3001	Book Display	48 x 30 x 49	80	\$ 2,912.00
VS-3003	Magazine Display	48 x 17 x 48	170	2,025.00
VS-3004	Newspaper Stand	32 ¹ / ₄ x 36 x 48	95	3,363.00
VS-3005	Paperback or Video Rotating Display	26 x 26 x 51 ³ / ₄	300	4,127.00
VS-3013	Double Face Book Truck	40 x 16 x 36	125	1,998.00
VS-3015	Double Face Sloped Shelf Book Truck	40 x 24 x 36	160	2,381.00
VS-3017	Encyclopedia Display	40 x 16 x 36	110	2,254.00
VS-3026	Dictionary Stand	24 x 18 x 42	80	2,559.00
VS-3027	Atlas Stand	30 x 24 x 42	180	2,891.00
VS-3028	Revolving Dictionary Stand	24 x 20 x 37	100	2,063.00



VS-3001



VS-3017

STANDARD FINISHES: Natural Oak (NO), Medium Oak (MO) STANDARD EDGE STYLES: Round-over, Fluted (beaded), Half-round, Custom

All items are F.O.B. Missoula, MT 59802. Allow 4-6 weeks lead time for shipping.

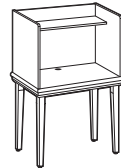
LIBRARY VISION SERIES

2018 Price List

STUDY CARREL

PAGE 3

Model #	Description	Product Size (W x D x H)	Ship Wt (lbs)	Suggested Retail
VS-3021	Single Study Carrel	36 x 24 x 54	115	\$ 1,970.00
VS-3022	Back-to-Back Study Carrel	36 x 48 x 54	175	2,399.00
VS-3023	Side-by-Side Study Carrel	72 x 24 x 54	185	2,646.00
VS-3025	Reference Carrel	36 x 24 x 35	70	1,662.00
VS-3029	Computer Carrel	36 x 30 x 51	130	2,051.00



VS-3021

TABLES

Model #	Description	Product Size (W x D x H)	Ship Wt (lbs)	Suggested Retail
48R-OF-B4	HPL; 3mm Oak	48 x 48 x 30	100	\$ 950.00
48S-OF-B4	HPL; 3mm Oak	48 x 48 x 30	120	1,040.00
60R-OF-B4	HPL; 3mm Oak	60 x 60 x 30	140	1,228.00
60S-OF-B4	HPL; 3mm Oak	60 x 60 x 30	160	1,270.00
2448T-OF-B4	HPL; 3mm Oak	48 x 24 x 30	65	838.00
3060T-OF-B4	HPL; 3mm Oak	60 x 30 x 60	80	966.00

STANDARD FINISHES: Natural Oak (NO), Medium Oak (MO) STANDARD EDGE STYLES: Round-over, Fluted (beaded), Half-round, Custom

All items are F.O.B. Missoula, MT 59802. Allow 4-6 weeks lead time for shipping.